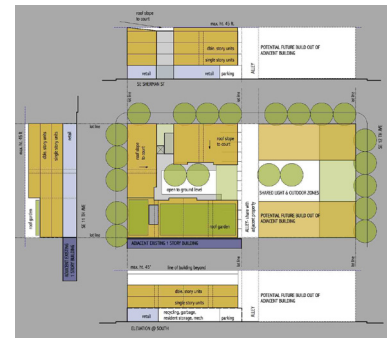
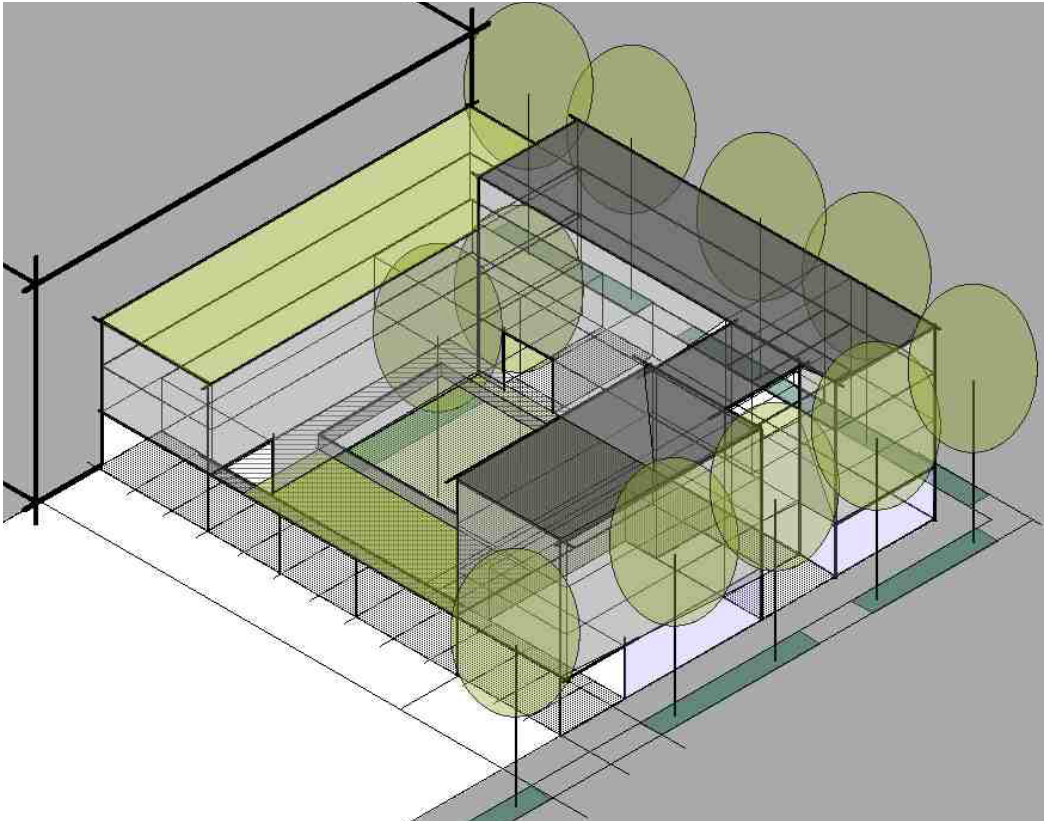


Willamette Watershed Mixed Use

2008 Portland, Oregon



SITE & PROGRAM

The project site is located in a transitional zone between a commercial and industrial area and adjacent residential neighborhoods. Multiple conceptual layouts were studied to combine a mix of uses, integrate alley site access, and sheltered parking. Environmental aspects such as sunlight, air, water retention/ re-use, and a potential eco-roof were considered. Apartment types and layouts were explored to provide private outdoor areas for each unit and balanced daylighting.

Architect/ Designer: Constructive Form LLC

in collaboration with di Benedetto Thomson

Livingstone Architects

Building Type: Mixed use, multifamily housing

Project Scope: Feasibility Study & Schematic Design

Client: Private

Size (site): 10,000 SF site

Size (building): 3,600 SF: Commercial

16,900 SF: Residential

6,500 SF: Courtyard, Parking,

Roof Gardens & Terraces

Constructive Form
Architecture and Design LLC

www.constructiveform.com

Willamette Watershed Mixed Use

2008 Portland, Oregon

